

RESEARCH SYMPOSIUM

2024



APRIL 19, 2024

Western Kentucky Heart & Lung
421 US 31-W Bypass, Bowling Green, KY
3rd Floor Auditorium
7AM-3:30PM

SPEAKERS



Shadowen Lecturer

Emerging Cancer Trends: What Everyone Needs to Know

Associate Professor of Medicine, Medical Oncology, Hematology and Medical Oncology
Program Director – Markey Cancer Center, UK HealthCare

REEMA ANIL PATEL, MD



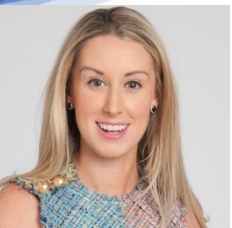
Why Communities Need Trauma Providers, Systems, and Centers

Paul A Kearney MD Endowed Chair in Trauma Surgery
Chief, Division of Acute Care Surgery – UK College of Medicine
Trauma Medical Director – UK HealthCare

ANDREW C. BERNARD, MD, FACS

Panel Discussion: Teaching Medicine to the Internet Generation and Navigating Gen Z's Learning Landscape

Kristy Deep, MD – Associate Professor of Internal Medicine & Residency Program Director, University of Kentucky
Dawn Wright, PhD, CNE, APRN-PMHNP – Professor, BSN Program Coordinator, Western Kentucky University School of Nursing and Allied Health
Tony Bohn, MA – Retired VP and Chief Human Resources Officer for Med Center Health



The Modern Cardiac Intensive Care Units and the Genesis of Critical Care Cardiology

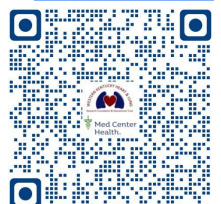
Interventional Cardiology and Cardiac Critical Care and
Director Cardiac Intensive Care Unit – Centennial Medical Center, Nashville, TN

ANN GAGE, MD, MS, FACC

LUNCH PROVIDED

Podium Presentations from winners of research in various medical disciplines

Register Online by Scanning the QR Code or Visit: wkhresearch.com, and click on the Symposium 2024 tab. We look forward to seeing you!



Registration: Participants are encouraged to register online by scanning the QR code on the flyer below, or visiting our website: <https://www.wkhlresearch.com/copy-of-research-symposium-2023>. Walk up/In Person registration will be available on the day of the event, with registration fees payable via PayPal or check.

Refund Policy: 100% refund will be provided if a cancellation is submitted up to 72 hours prior to the event, after that, a 50% refund will be made available to the original form of payment. For cancellations, please email Sarah Inman at: sarah.inman@uky.edu

Learning Objectives:

Upon completion of this activity, participants will be able to:

- Explain how all medical disciplines are involved in the care of a cancer patient, focusing on the importance of new and emerging treatments.
- Evaluate the role and significance of trauma care for a community.
- Describe the functions of a cardiac critical care unit and how this specialized unit may contribute to improved outcomes for cardiac patients.
- Discuss the different approaches in working with healthcare students who identify as part of the Gen Z population.
- Review the research opportunities found in south-central Kentucky.

Target Audience: Physicians, Pharmacists, and Nurse

Accreditation Information



JOINTLY ACCREDITED PROVIDER™
INTERPROFESSIONAL CONTINUING EDUCATION

In support of improving patient care, University of Kentucky HealthCare CECentral is jointly accredited by the Accreditation Council for Continuing Medical Education (ACCME), the Accreditation Council for Pharmacy Education (ACPE), and the American Nurses Credentialing Center (ANCC), to provide continuing education for the healthcare team.

CME

This live activity is designated for a maximum of 6 *AMA PRA Category 1 Credit(s)*™. Physicians should claim only credit commensurate with the extent of their participation in the activity.

IPE Competencies

- Values/Ethics for Interprofessional Practice
- Roles/ Responsibilities
- Interprofessional Communication
- Teams and Teamwork

CPE

This knowledge-based activity will award 6 contact hours (0.600 CEUs) of continuing pharmacy education credit in states that recognize ACPE providers.

CNE

The maximum number of hours awarded for this Continuing Nursing Education activity is 6 nursing contact hours.

ADA Accommodations-- We are committed to making this event accessible to all individuals. Please contact Dr. Melinda Joyce at: JoycMC@MCHHealth.net if you require accommodations such as sign language interpretation, assistive listening devices, or other accessibility needs.

An Equal Opportunity University

